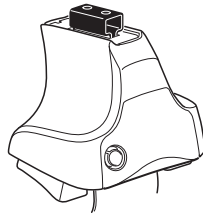
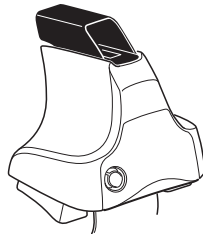
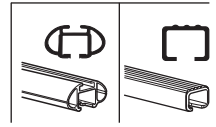


# Kit 1398

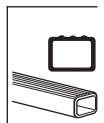
SEAT León, 5-dr Hatchback, 05-12



754 Rapid System  
480R Rapid Traverse (North America)



480 Traverse (North America)



- 754 Rapid System x4
- 480R Rapid Traverse (North America) x4
- x1 (Ruler)
- x4 (Bracket)
- x4 (Screw)

754 Rapid System  
480R Rapid Traverse (North America)

- 480 Traverse (North America) x4
- x1 (Ruler)
- x4 (Bracket)
- x4 (Screw)

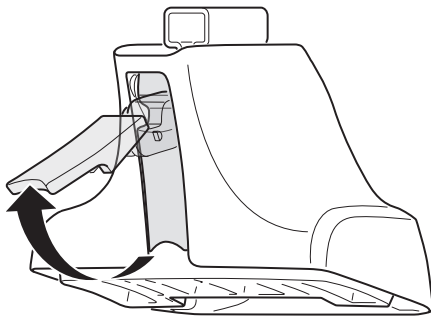
480 Traverse (North America)

(North America)

- x2 (Bracket)
- x2 (Screw, 23 mm)
- x2 (Screw, 23 mm)
- x4 (Screw)
- x4 (Screw)
- x1 (Bracket, 17 mm)
- x2 (Screw, 23 mm)
- x2 (Screw, 23 mm)
- x2 (Screw)
- x4 (Screw)
- (North America) x2 (Bracket)
- x2 (Screw, 23 mm)
- x2 (Screw)

- 664 x1
- 665 x1
- 1214 x2
- 74 x1
- 75 x1
- 78 x1
- 79 x1
- Diagram with R/R, P/R, F/L, R/L labels x1

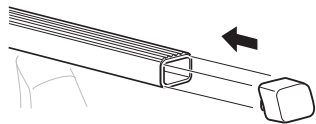
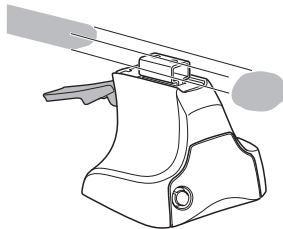
1



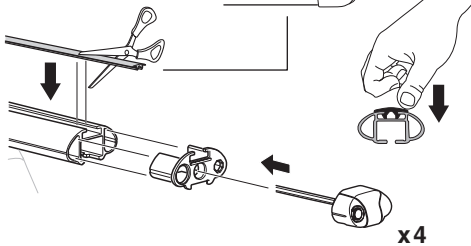
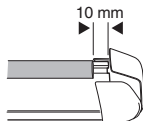
2



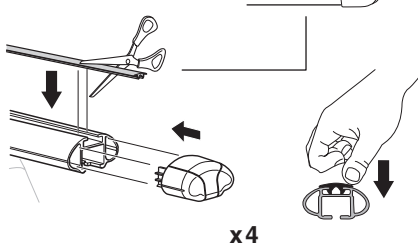
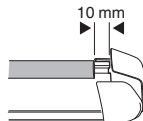
754 Rapid System  
480R Rapid Traverse  
(North America)



x4



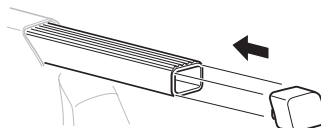
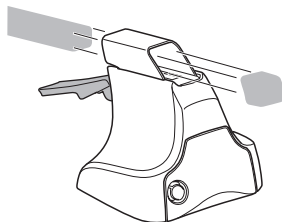
x4



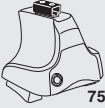
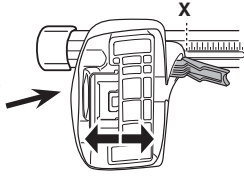
x4



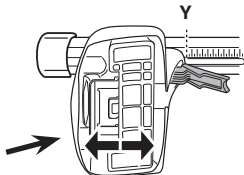
480 Traverse  
(North America)



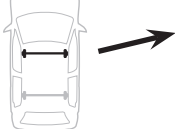
x4

**3****754** Rapid System

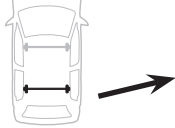
	<b>X</b>
<b>SEAT León, 5-dr Hatchback, 05-12</b>	<b>37</b>



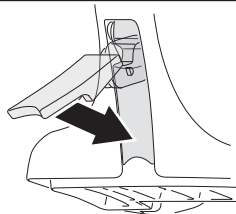
	<b>Y</b>
<b>SEAT León, 5-dr Hatchback, 05-12</b>	<b>32</b>

**3****480R** Rapid Traverse**480** Traverse**(North America)**

	<b>X inch</b>	<b>X mm</b>
<b>SEAT León, 5-dr Hatchback, 05-12</b>	<b>40 1/4"</b>	<b>1021 mm</b>

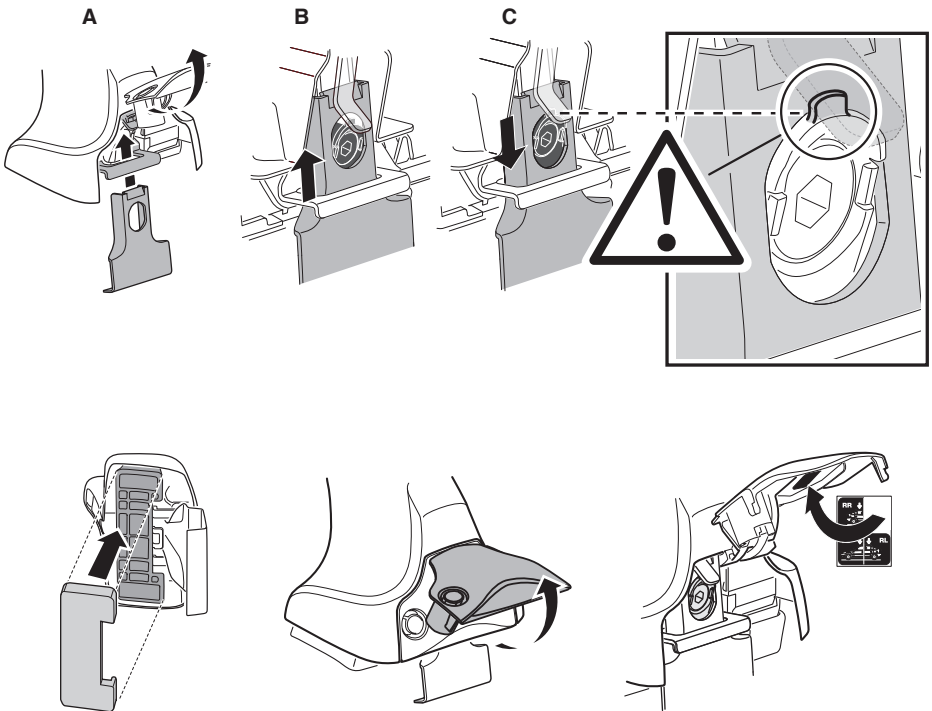
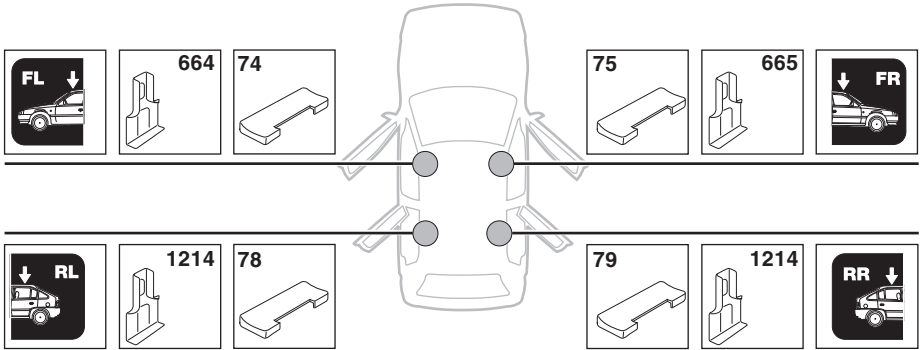


	<b>Y inch</b>	<b>Y mm</b>
<b>SEAT León, 5-dr Hatchback, 05-12</b>	<b>38 1/4"</b>	<b>971 mm</b>

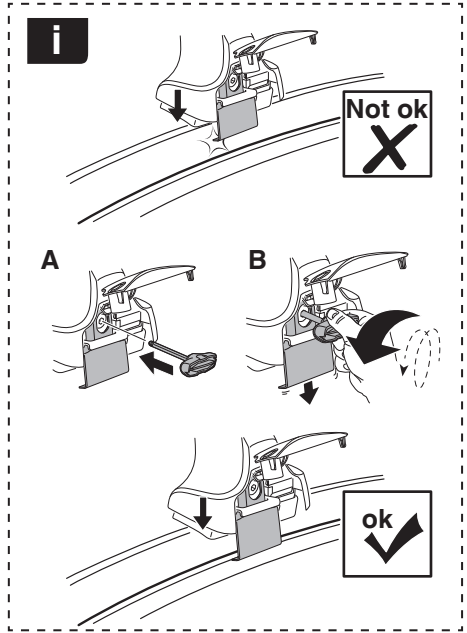
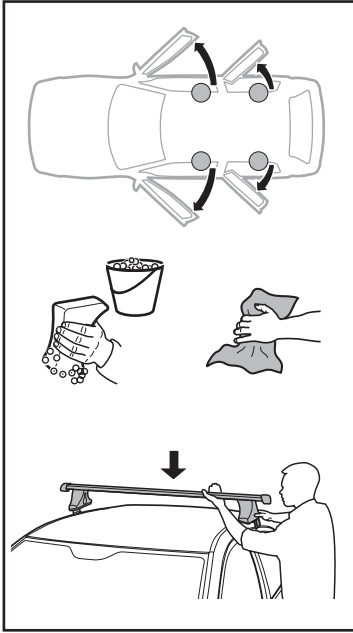
**4**

# 5

SEAT León, 5-dr Hatchback, 05-12

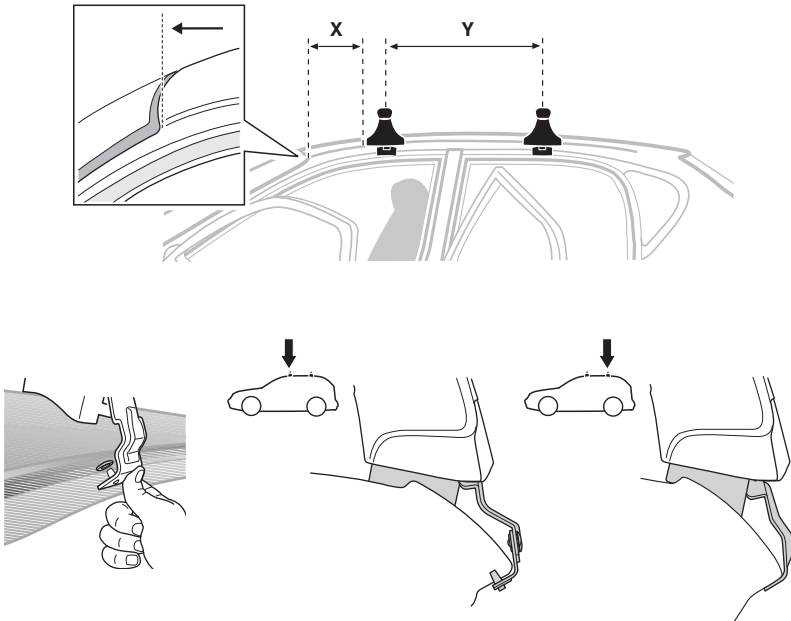


6

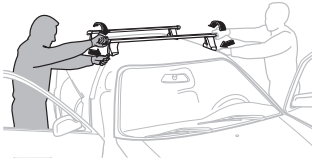


SEAT León, 5-dr Hatchback, 05-12

X mm	Y mm	X inch	Y inch
205 mm	710 mm	8 1/8"	28"



7



<b>GB/US</b>	Tighten alternately
<b>D</b>	Die Schrauben abwechselnd anziehen
<b>F</b>	Serrer alternativement chaque côté
<b>NL</b>	Afwisselend aan de linker- en de rechterkant aandraaien
<b>I</b>	Alternare il serraggio delle viti
<b>E</b>	Apertar alternativamente
<b>PT</b>	Aperte alternadamente
<b>S</b>	Dra åt växelvis
<b>FIN</b>	Kierrä vuorotellen
<b>EST</b>	Pinguldage vaheldumisi
<b>LAT</b>	Pielveiciet pamišus
<b>LIT</b>	Užsukinėkite pakaitomis
<b>PL</b>	Śruby dokręcaj naprzemiennie
<b>RU</b>	Загтягивайте попеременно

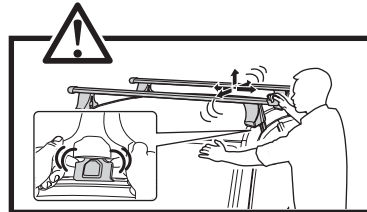
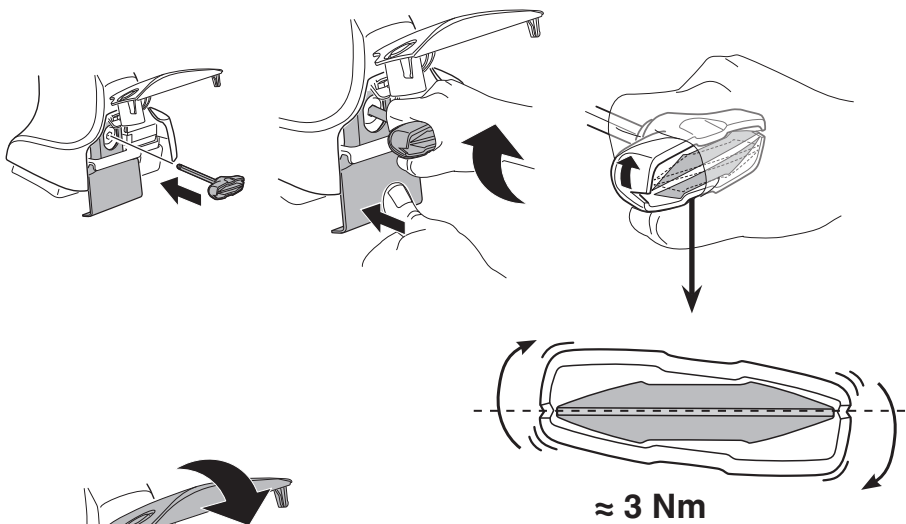
<b>CZ</b>	Pokręťta bagażníka dokręcaj naprzemiennie.
<b>SK</b>	Dofahajte striedavo
<b>SLO</b>	Privijajte izmenično.
<b>HR</b>	Naizmjenočno zategnite
<b>HU</b>	Egymástól függetlenül szorítandó
<b>GR</b>	Σφιγγετε εναλλάξ
<b>TR</b>	Dönüşümlü sıkın

**中文** 交替拧紧

**한국어** 번갈아 가며 조이십시오.

**日本語** 交互に締め付けてください。

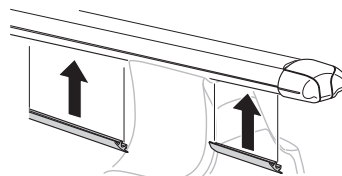
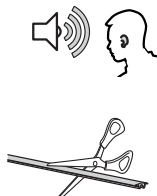
**ไทย** ชันในแบบสลับ

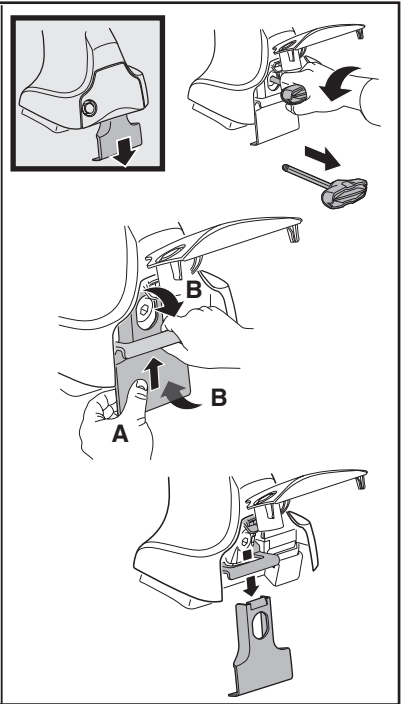
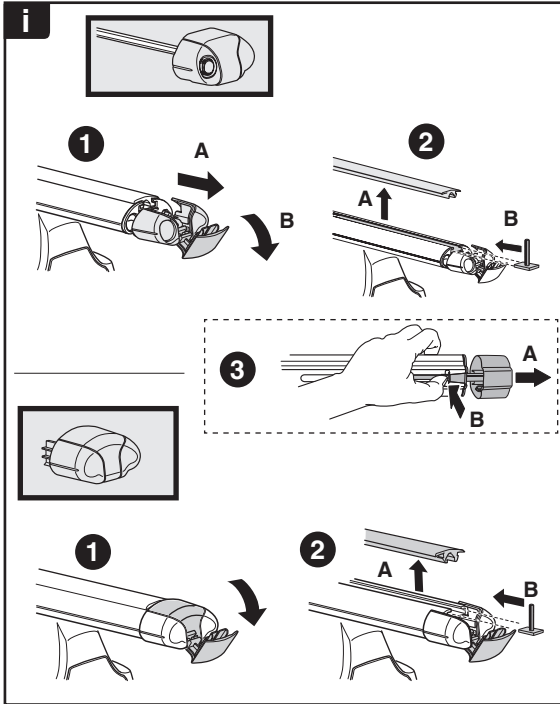
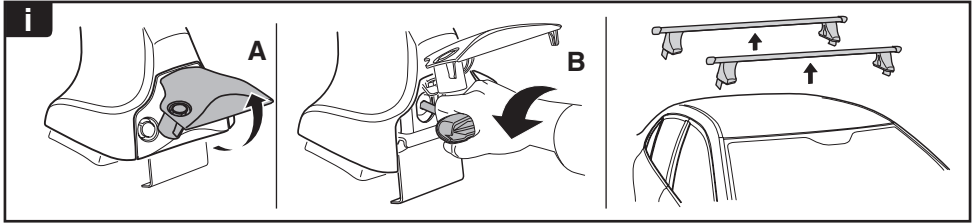


8

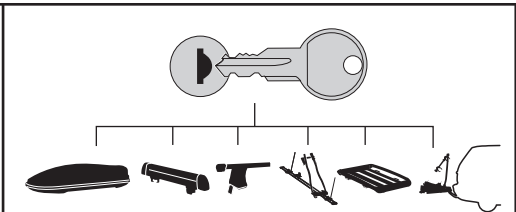


x1  
17 mm

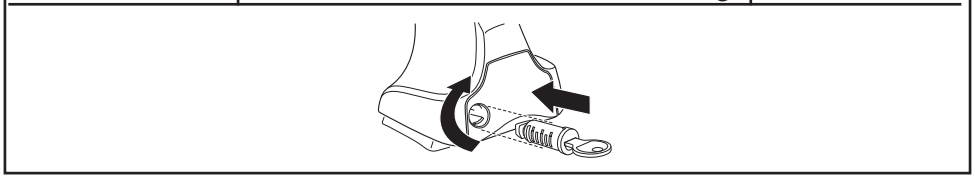




**THULE**  
SWEDEN  
**ONE  
KEY  
SYSTEM**



		(x4)
		(x6)
		(x8)
NA		(x10)
EUR		(x12)
ASIA		



WW ▶ Thule Sweden AB, Box 69, 330 33 Hillerstorp, SWEDEN  
NA ▶ Thule Inc., 42 Silvermine Road, Seymour, Connecticut 06483, USA

info@thule.com  
customer.service@thule.com

www.thule.com